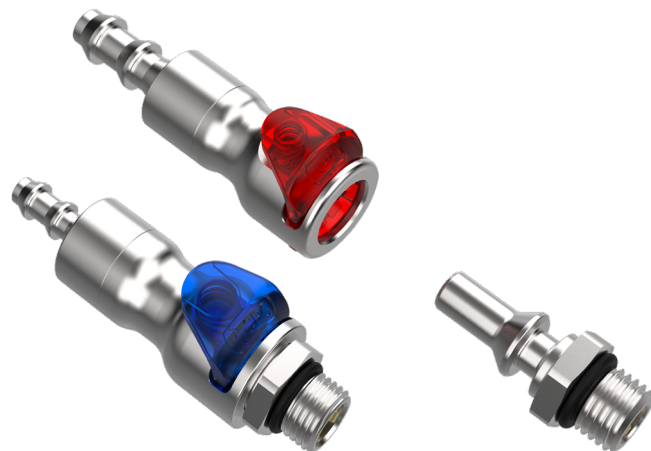


EVERIS® UQD02 SERIES CONNECTOR

Everis® UQD02 Series quick disconnect couplings

with 1/8" flow are designed for liquid cooling applications. These quick disconnects offer ease of use, outstanding reliability, high performance and resistance to corrosion. The Everis UQD02 quick disconnect is a liquid cooling coupling designed to the OCP specification for server applications.



SPECIFICATIONS

PRESSURE:

Vacuum to 120 psi, 8.3 bar

TEMPERATURE:

Operating:

36°F to 167°F (2°C to 75°C)

Storage/Shipping:

-40°F to 167°F (-40°C to 75°C)

MATERIALS:

Main Components: 303 Stainless steel

Valves and Thumb Latch: High-performance polymer

Valve Springs (wetted): Stainless steel

External Spring: Stainless steel

Seals: EPDM

Compliance: RoHS, REACH

COLOR:

Metallic with Black, Blue or Red

TUBING SIZES:

1/4" (6.4mm ID)

THREAD SIZES:

SAE-4

LUBRICANTS:

Krytox® PFPE

SPILLAGE:

<0.015 cc per disconnect rated at 0 psi

FLOW COEFFICIENT:

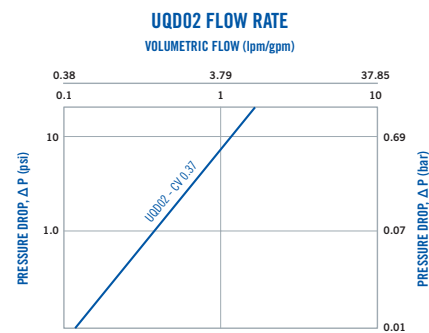
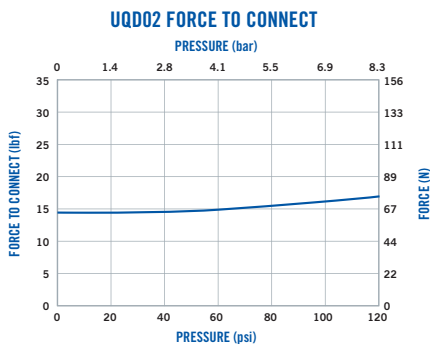
Cv ~ 0.37 max (0.32 Kv)

WARNING: Pressure, temperature, chemicals, and operating environment can affect the performance of couplings. It is the customer's responsibility to test the suitability of CPC's products in their own application conditions.

FEATURES

- Non-spill valve design → Dry break. Disconnect under pressure with no spills
- Redundant seals in circular state when connected → Extra protection from leaks over an extended period of time
- High flow capacity with low pressure drop → Efficient, cost-effective cooling
- Ergonomic body and latch design → Simple intuitive one-handed operation
- Audible click → Signals secure connection
- Barbed and threaded terminations → Suited for various tubing options including clampless locking hose barb for reinforced tubing
- Intel-inspired design → Compliance with OCP standard for interoperability
- Designed and manufactured for scale → Supply chain assurance

BENEFITS



These graphs are intended to give you a general idea of the performance capabilities of each product line. Contact CPC for flow of a particular coupling combination.



cpcworldwide.com/Everis-UQD02



COLDER PRODUCTS COMPANY
U.S.A.
PHONE: +1 (651) 645-0091
TOLL FREE: +1 (800) 444-2474
E-MAIL: info@cpcworldwide.com

COLDER PRODUCTS COMPANY GMBH
Germany
E-MAIL: cpcgmbh@cpcworldwide.com

DOVER (SHANGHAI) INDUSTRIAL CO., LTD
ShangHai, China
PHONE: +86 21 2411 2666
TOLL FREE: +86 400 990 1978
E-MAIL: asiapacific@cpcworldwide.com

EVERIS® UQD02 SERIES DIMENSIONS

COUPLING BODIES - Stainless steel



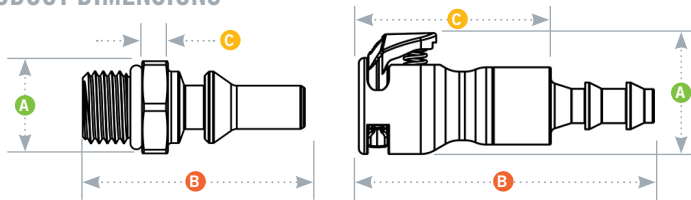
TERMINATION	TUBING/THREAD SIZE	METRIC EQ.	PART NUMBER	COLOR	A	B	C
IN-LINE HOSE BARB	1/4" ID	6.4mm ID	4238300	Black	0.88 (22.4)	2.15 (54.5)	1.40 (35.5)
	1/4" ID	6.4mm ID	4238301	Blue	0.88 (22.4)	2.15 (54.5)	1.40 (35.5)
	1/4" ID	6.4mm ID	4238302	Red	0.88 (22.4)	2.15 (54.5)	1.40 (35.5)

COUPLING INSERTS - Stainless steel



TERMINATION	TUBING/THREAD SIZE	METRIC EQ.	PART NUMBER	COLOR	A	B	C
IN-LINE STRAIGHT THREAD PORT SAE	SAE-4	6.4mm ID	4238400	Black	0.62 (15.7)	1.35 (34.3)	0.158 (4.0)
	SAE-4	6.4mm ID	4238401	Blue	0.62 (15.7)	1.35 (34.3)	0.158 (4.0)
	SAE-4	6.4mm ID	4238402	Red	0.62 (15.7)	1.35 (34.3)	0.158 (4.0)

PRODUCT DIMENSIONS



- A = Height/Diameter
- B = Total Length
- C = Connected Length

All measurements are in inches (millimeters) unless otherwise noted.

WARRANTY: All sales are subject to Colder Products Company's limited express warranty set forth in the CPC catalog. Contact your local distributor or CPC Customer Service for warranty provisions.

Warning: Due to the wide variety of possible fluid media and operating conditions, unintended consequences may result from the use of this product, all of which are beyond the control of CPC. It is the user's responsibility to carefully determine and test for compatibility for use with their application. All such risks shall be assumed by the buyer.

COPYRIGHT © 2024 BY COLDER PRODUCTS COMPANY.

CPC, Colder Products Company, and Colder Products are registered trademarks with the United States Patent and Trademark Office.

For detailed trademark information, please visit: <https://www.cpcworldwide.com/Trademarks>